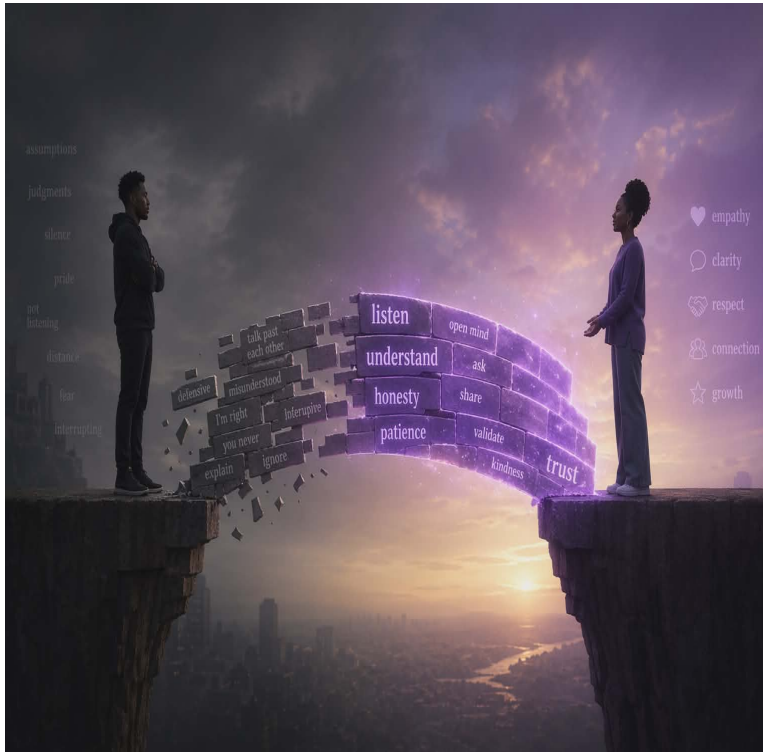


The Bridge Between Two Inner Worlds

By: D. Barnes



Communication in relationships gets talked about so often that it almost loses its weight. Everybody says it matters—but not everybody understands *how* it matters, or why so many relationships fall apart even when both people believe they're "talking." The truth is, communication isn't just about speaking. It's about connection, interpretation, timing, emotional awareness, and intention all working together—or falling apart.

At its core, communication is the bridge between two inner worlds. You have your thoughts, your feelings, your experiences. The other person has theirs. The only way those two worlds meet is through what's expressed and how it's received. That's where things get complicated. Because what you *say* isn't always what they *hear*, and what they *hear* isn't always what you *meant*. That gap? That's where misunderstandings, resentment, and emotional distance quietly grow.

One of the biggest issues in relationships is the assumption of understanding. People start to believe, "They should know what I mean," or "If they cared, they'd just get it." But communication doesn't thrive on assumptions—it thrives on clarity. Even in long-term relationships, where you've built history and familiarity, clarity is still necessary. In fact, it becomes more important over time, because people evolve. What you needed a year ago might not be what you need today, and if that evolution isn't communicated, you end up loving each other based on outdated versions of yourselves.

Another layer to this is emotional communication versus logical communication. A lot of people are good at explaining *what* happened but struggle to express *how it felt*. And in relationships, feelings carry more weight than facts. You can win every logical argument and still lose emotional connection. For example,

saying “I was busy” might explain your absence, but it doesn’t address how your partner felt when you weren’t there. Real communication requires stepping into that emotional space and acknowledging it, even if it wasn’t your intention to cause harm.

Then there’s timing. You can say the right thing at the wrong time and still create damage. Communication isn’t just about content—it’s about delivery. Trying to resolve a serious issue when one person is overwhelmed, distracted, or defensive is like trying to plant seeds in dry soil. Nothing sticks. Effective communication often requires patience—the ability to recognize when to speak, when to pause, and when to revisit something later with a clearer mindset.

Listening is another area where relationships either grow or break down. And not just listening to respond—but listening to understand. There’s a difference. Listening to respond means you’re waiting for your turn to talk, already preparing your defense or counterpoint. Listening to understand means you’re actually absorbing what the other person is saying, even if it challenges your perspective. That kind of listening creates safety. And when people feel safe, they open up more honestly, which strengthens the connection.

A major obstacle in communication is defensiveness. When people feel attacked, they naturally protect themselves. But in relationships, that protection often comes at the cost of connection. Instead of hearing the concern, the focus shifts to proving innocence or assigning blame. This turns conversations into battles rather than opportunities for growth. Learning to lower that defense—even when it’s uncomfortable—is key. It allows both people to move from “me versus you” to “us versus the issue.”

Tone and body language also play a bigger role than most people realize. You can say something kind with a harsh tone and completely change its meaning. You can say something neutral with dismissive body language and create distance. Communication is as much nonverbal as it is verbal. The energy you bring into a conversation often speaks louder than the words themselves.

Another critical piece is consistency. Healthy communication isn’t something you turn on only when there’s a problem. It’s built in everyday moments—checking in, expressing appreciation, sharing thoughts, being present. When communication is consistent, it creates a strong foundation. So when challenges do come up, you’re not trying to build understanding from scratch—you’re working from something that’s already been established.

Conflict, believe it or not, isn’t the enemy of a relationship. Poor communication during conflict is. Disagreements are natural when two individuals are navigating life together. The goal isn’t to avoid conflict—it’s to handle it in a way that leads to understanding instead of division. That means staying focused on the issue, avoiding personal attacks, and being willing to compromise. It also means

recognizing when you're wrong and being able to say it. Accountability is one of the most powerful forms of communication, yet it's often the hardest for people to practice.

There's also the concept of unmet expectations. Many communication breakdowns stem from expectations that were never clearly expressed. One person assumes something is understood, while the other is completely unaware. Over time, that gap turns into frustration. Clear expectations—spoken openly and revisited when necessary—prevent a lot of unnecessary conflict. It's not about demanding; it's about aligning.

In today's world, technology adds another layer to communication challenges. Text messages, social media, and quick replies often replace deeper conversations. But digital communication lacks tone, context, and emotional nuance. A simple message can be misinterpreted in multiple ways. While technology makes it easier to stay connected, it also makes it easier to misunderstand each other. That's why certain conversations still need to happen face-to-face or, at the very least, voice-to-voice.

Growth in communication also requires self-awareness. You have to understand your own communication style before you can effectively connect with someone else. Are you avoidant? Do you shut down when things get intense? Do you become overly aggressive or dismissive? Recognizing your patterns allows you to adjust them. Without that awareness, you end up repeating the same cycles, regardless of who you're with.

Trust is deeply tied to communication. When communication is honest, consistent, and respectful, trust naturally builds. When it's inconsistent, unclear, or hurtful, trust erodes. And once trust is damaged, communication becomes even more difficult, because everything is filtered through doubt. Rebuilding that trust requires intentional, transparent communication over time—not just words, but aligned actions.

At the end of the day, communication in relationships is less about being perfect and more about being intentional. It's about choosing to understand as much as you want to be understood. It's about creating space for honesty without fear. It's about recognizing that the goal isn't to win conversations—it's to strengthen the connection.

Because when communication is strong, it becomes the glue that holds everything together. And when it's weak, even the strongest feelings can slowly come undone.